

2023년 하반기 경영진 안전점검 (사고위험 취약현장)

우원개발(주) HSE팀

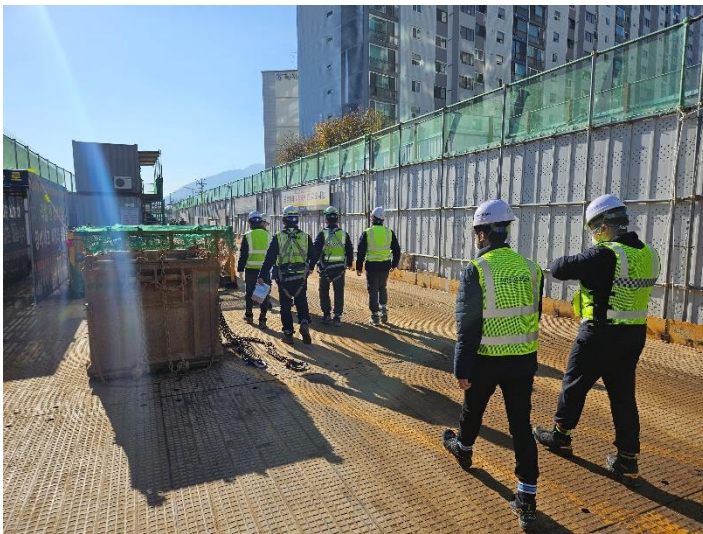
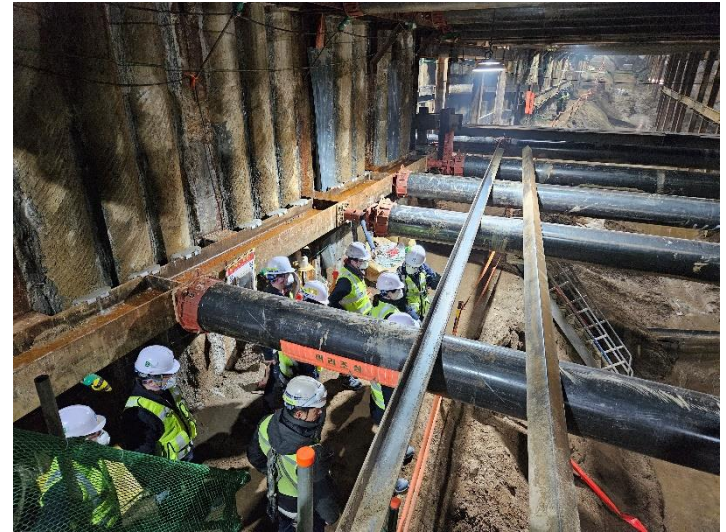
1. 점검사진(신안산선 3-2B)



1. 점검사진(신안산선 5-1)



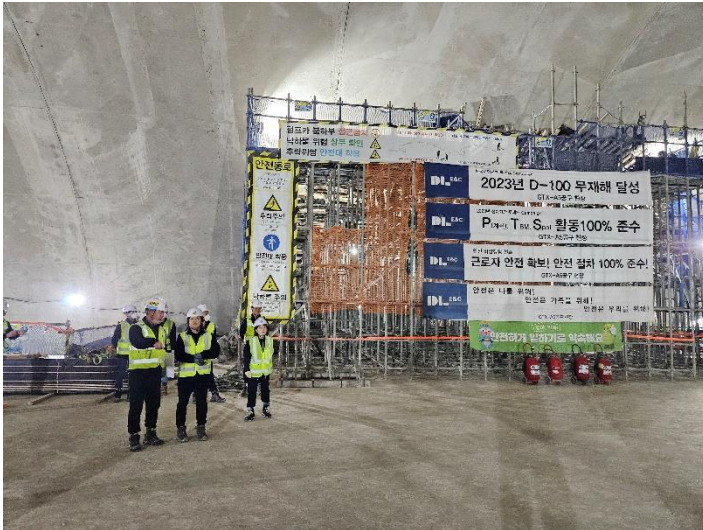
1. 점검사진(도봉산 옥정2)



1. 점검사진(별내선3)



1. 점검사진(GTXA5)



1. 점검사진(동북선2-2)

